

Design

Data dell'asta: 23.09.2024, 16:00

Tipo d'asta: Asta online

Prezzo di aggiudicazione non comprensivo di diritti né IVA



Lotto No. 1

A “Sunset in New York” sofa, designed by Gaetano Pesce,

Stima:

EUR 7.000,- a EUR 10.000,-

1980, for Cassina, Italy, steel frame, polyurethane, fabric cover, height c. 103 cm, c. 234 x 128 cm. (DRAX)

Cf. Lit.:

«L’Azienda Eclettica», Domus, no. 617, May 1981, p. 46 - M.-J. Geyer, Gaetano Pesce 1975–1985, Musée d’Art Moderne de Strasbourg 1986, p. 62, no. 51, p. 63, no. 49/50 - Opuscolo Collezione Cassina, III Edizione, Meda 1986, pp. 90–91 - F. Vanlaethem, Gaetano Pesce: Architecture, Design, Art, Milan 1989, p. 41 (model), p. 76 - G. Gramigna, Repertorio del design italiano 1950–2000, vol. 2, Turin 2003, p. 282 - G. Bosoni, Made in Cassina, Milan 2008, p. 268



Lotto No. 2

An “Ottomane”, designed by Franz West

Stima:

EUR 6.000,- a EUR 8.000,-

2005, for Elisabeth & Klaus Thomann Edition, Austria, four-legged wrought structural steel frame, foam resting surface with natural-colour linen, hallmarked: FW 59/100, edition hallmark: ETK, dimensions: height c. 45 cm, width c. 83 cm, depth c. 83 cm. Slight signs of age and traces of use. (MHA)

Number 59 from the limited edition of 100 examples

Provenance:

Private Collection, Austria.



Lotto No. 3

An “Ohne Titel” carpet, designed by Peter Kogler*,

Stima:

EUR 16.000,- a EUR 25.000,-

2009, manufactured by Backhausen Interior Textiles, Austria, virgin wool, worsted yarn, hand-tufted, manufacturer's label, c. 360 x 360 cm. (DRAX)

A unique item. Designed for the exhibition «Wiener Musterzimmer» in the Orangery of the Belvedere Vienna, 23 September 2009 - 24 January 2010. The carpet was part of a room concept whose walls were covered in black and grey lines. A naked light bulb hung in the centre, above the carpet. The pattern of the carpet thematises the neuronal structures of the brain, ornamentally reduced to black and white. In addition to Peter Kogler's room, the exhibition included various room designs by Gilbert Bretterbauer, Florian Pumhösl, Gerwald Rockenschau, Lisa Ruyter and Esther Stocker.

Lit.:

A. Husslein-Arco, Wiener Musterzimmer. Gilbert Bretterbauer, Peter Kogler, Florian Pumhösl, Gerwald Rockenschau, Lisa Ruyter, Esther Stocker, Belvedere Vienna 2009, ill. p. 54/55 und credits.



Lotto No. 4

A prototype book table, designed by Ron Arad

Stima:

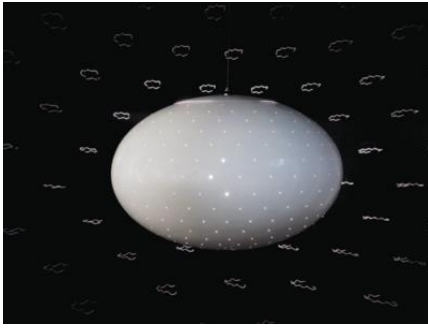
EUR 15.000,- a EUR 20.000,-

1983, sculptural sheet steel construction, sandblasted and hand-welded, hollow interior. Height c. 70 cm, depth c. 38 cm, length c. 90 cm. Signs of age and traces of use, scratches and abrasions, traces of oxidations. (MHA)

Prototype of the book table model. Designed by Ron Arad in 1983 and produced by Dirk Hainlen, Stuttgart for Ron Arad Associates. The limited edition included 20 examples, some in sandblasted aluminium and some in patinated steel. The only prototype designed with a special width of 38 cm. The first realised prototype of this test series.

Provenance:

Dirk Hainlen Archive



Lotto No. 5

An I. P. C. O. Smartie Ceiling Light, designed by Ron Arad,

Stima:

EUR 16.000,- a EUR 22.000,-

2001, manufactured by Ron Arad Studio, London, for The Gallery Mourmans, Maastricht, fibreglass, polyester, white finish, diameter c. 80 cm. (DRAX)

From the limited edition of 50 examples by Mourmans Gallery, Maastricht.

Provenance:

Klaus Engelhorn Collection, Vienna, purchased at Mourmans Gallery in 2001.

Lit.:

J. Pavitt, BRILLIANT, LIGHTS & LITHINGS, London 2004. pp. 22/23

The I. P. C. O. lamp (Inverted Pinhole Camera Obscura) works according to the 'camera obscura' principle. The bundled light is thrown onto the surroundings through many small holes, creating a «wall paper» pattern of light and shadow on the walls.



Lotto No. 6

A prototype book table, designed by Ron Arad

Stima:

EUR 15.000,- a EUR 20.000,-

1983, sculptural construction made of solid aluminium.

Height c. 69 cm, depth c. 30 cm, length c. 83 cm. Signs of age and traces of use, scratches and abrasions, traces of oxidations. (MHA)

Prototype of the 'book table' model. Designed by Ron Arad in 1983 and produced by Dirk Hainlen, Stuttgart for Ron Arad Associates. The limited edition included 20 examples, some in sandblasted aluminium and some in patinated steel.

Provenance:

Dirk Hainlen Archive



Lotto No. 7

A lamp/ lighting object “Fiche Male”, Yonel Lebovici *,

Stima:

EUR 15.000,- a EUR 20.000,-

France c. 1978, sculptural construction in the form of an over-sized plug with cable made of chromium plated aluminium and steel, plastic. Dimensions of the plug: height c. 37 cm, width c. 37 cm, depth c. 65 cm. Signs of age and use, scratches and abrasions, without guarantee for electrical fitting, fitted for electricity with Italian plug / connection. (MHA)

No. 3 from the limited edition of 30 examples and 2 AP's (artist's proofs).

Lit.:

Michèle Chartier, Yonel Lebovici: Sculpteur de haut niveau, Paris, 1995, p. 64



Lotto No. 8

A complete set “Fourteen Ceramics and Glasses”, designed by Ettore Sottsass*,

Stima:

EUR 40.000,- a EUR 50.000,-

2003, for Short Stories, Livorno/Italy, executed in Tuscany (ceramic) and Murano (glass), polychrome, glazed ceramic, polychrome mouth-blown glass in “incalmo”, “incamiciatura” and “morisa” technique, all pieces marked: 2003/SHORT STORIES BY/Ettore Sottsass/HAND MADE IN ITALY/ 24/33, engraved on the glass: short stories/Murano Italy. (DRAX)

Provenance:

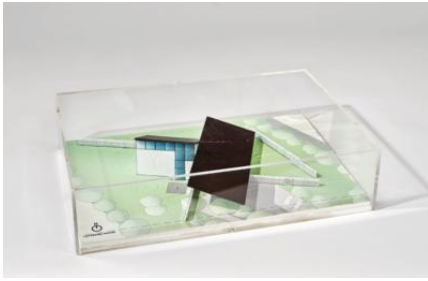
Private Collection, Italy.

Lit.:

St. Campatelli - A. Alessi - E. Sottsass, Short Stories, Livorno 2003.

- «Cuculo», height 32 cm, diameter 35 cm
- «Merlo», height 15 cm, diameter 25 cm
- «Tortora», height 18 cm, diameter 35 cm
- «Ganga», height 54 cm, diameter 17 cm
- «Pettiroso», height 22 cm, diameter 33 cm
- «Grifone», height 30 cm, diameter 20 cm
- «Ibis», height 45 cm, diameter 36 cm
- «Civetta», height 43 cm, 20 x 20 cm
- «Picchio», height 9 cm, 35 x 35 cm
- «Upupa», height 63 cm, 29 x 29 cm
- «Tordo», height 18 cm, 30 x 10 cm
- «Marabu», height 40 cm, diameter 29 cm
- «Airone», height 41 cm, diameter 22 cm
- «Allodola», height 19 cm, diameter 32 cm.

All objects are number 24 from the limited edition of 33 examples.



Lotto No. 9

Plans for a private house in Belgium, Ettore Sottsass & Sottsass Associati

*,
,

Stima:

EUR 12.000,- a EUR 18.000,-

2002, consisting of:

- maquette in plexiglas box, height 14.5 cm, 58.5 x 40 cm, colour print on paper and cardboard
- Elevations - Proposal A
- Elevations - Proposal B
- Plan and Roof Plan A
- Plan and Roof Plan B

all colour print/paper, dated: June 2002, scale 1:100, each c. 93 x 62 cm (DRAX)

Letter of Appointment and invoices are available.

Provenance:

Property of the client, Belgium

For copyright reasons, these plans are not suitable for construction in Austria. We cannot assess what the legal requirements for construction are in other countries



Lotto No. 10

A set of four ceramics from the “12 Colonne” series, designed by Alessandro Mendini

Stima:

EUR 3.200,- a EUR 4.000,-

2008, for Superego Editions, white and golden glazed ceramic sculptures in totem form reduced to basic geometric shapes, with geometrical décor. The underside marked with artist's signet, production stamp and number. Dimensions: c. 72 cm max. Slight signs of age and use, scratches and abrasions. (MHA)

From the “12 Colonne” series, which was produced in an edition of 50 examples.



Lotto No. 11

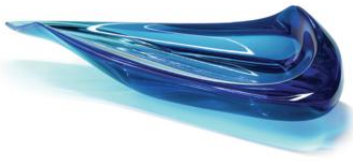
A set of four ceramics from the “12 Colonne” series, designed by Alessandro Mendini

Stima:

EUR 3.200,- a EUR 4.000,-

2008, for Superego Editions, polychrome glazed ceramic sculptures in totem form reduced to basic geometric shapes. The underside marked with artist's signet, production stamp and number. Dimensions: c. 72 cm max. Slight signs of age and use, scratches and abrasions. (MHA)

From the “12 Colonne” series, which was produced in an edition of 50 examples.



Lotto No. 12

An “Acrylic Bowl”, designed by Zaha Hadid,

Stima:

EUR 60.000,- a EUR 90.000,-

2007, for Sawaya & Moroni, Italy, transparent blue methacrylic, moulded from one block, inscribed on the underside: Acrylic Bowl/design Zaha Hadid 2007/Europe Edition/2/12/Sawaya & Moroni, c. 71 x 32 cm, height c. 13 cm. (DRAX)

No. 2 from the limited European edition of 12.

The formal virtuosity of this sculpture like bowl/centerpiece comes from an acrylic block mass-colored, melted and then carved and polished by hand.

Lotto No. 13



A “Tecla” arm chair, designed by Mario Cucinella,

Stima:

EUR 45.000,- a EUR 60.000,-

2023, for Sawaya & Moroni, Italy, solid carved ash wood stained dark brown, upholstery, fabric, 360-degree rotating mechanism, height c. 80 cm, diameter c. 93 cm, height of seat c. 43 cm. (DRAX)

Artist’s proof of a limited edition, which is executed differently with regard to its material, colour and fabric.

The circular economy has come of age. No longer is it merely a statement of intent, a well-meant suggestion about how to tackle the near future: it is now an integral part of a new way of going about designing, regardless of the scale and of the type of product in question. This is the holistic message and agenda of «Tecla», the environmentally compatible dwelling unit made of clay sourced in situ that was designed and built in 2021 by Mario Cucinella using 3D Crane Wasp 3D printing technology. Fascinated by the architect Mario Cucinella’s experiment and determined to pursue a comparably sustainable objective, Sawaya & Moroni invited him to create an entirely sustainable and environmentally friendly furniture design.

The structure’s single unitary shell, reminiscent of an upturned architectural cupola, houses the upholstered part of the seat and backrest, to which two further cushions are added by way of ensuring a correct ergonomic support. The 3D printing technology already tested for the inhabitable space is now used on the scale of the furnishings for the version of «Tecla» made of urban waste’s recycled plastic, while the wooden model that is made by assembling elements of solid wood employs stained ash sourced from controlled plantations, whose processing and finishing stages are based on strict respect for the environment.

«Tecla» is an iconic chair that generates a skillfully calibrated synthesis of composition by combining the dimension of furnishing with the memory of a protective, enveloping element.



Lotto No. 14

An unusual cabinet mod. Madia Primordiale, designed and manufactured by Officina Rivadossi

Stima:

EUR 6.000,- a EUR 9.000,-

2016, sculptural handmade limewood construction. The front with four doors, the interior fitted with glass shelves. Dimensions: height c. 210 cm, width c. 57 cm, depth c. 42 cm. Slight signs of age and use, scratches and abrasions. (MHA)

A unique piece

Officina Rivadossi is a carpentry firm that combines wood design and architecture. Pietro Ottavio and Marco Rivadossi founded the company in 2002.

Lotto No. 15 +

A prototype of the “Chess Court Table”, designed by Daniel Weil,

Stima:

EUR 6.000,- a EUR 8.000,-



for Eins zu Eins, Germany, four-legged solid oakwood structure. The chess table features chessboard made of maple and walnut wood. With the official World Chess Championship set - the only FIDE-approved chess set for the World Chess Championship, also designed by Daniel Weil. Incl. a bespoke removable small tray to hold a small chess clock or mobile phone. The tray is made polished stainless steel with a leather top. Two drawers with removable inlays to accommodate the chess pieces, a chess clock and the bespoke clock tray. Dimensions: height c. 75 cm, width c. 59 cm - 109 cm, depth c. 57.5 cm - 80 cm. Slight signs of age and use. (MHA)

Prototype alongside a limited edition of 50 plus examples.
With original certificate signed by the artist.

Daniel Weil was born in Buenos Aires in 1953. An architect, industrial designer and former professor of industrial design at the Royal College of Art, over the last four decades he has developed products, interiors, packaging and designs for a wide range of clients including Swatch, Lego, Krug, Superga, Benetton, Aldo, United Airlines, One & Only Resorts, the Savoy Hotel and the Dorchester in London. In 2013 Daniel Weil designed and directed the World Chess Candidates Tournament, which was won by the current World Champion Magnus Carlsen. He then designed the official chess game of the World Chess Organization (FIDE), which was used in the last two games in Mumbai and Sochi between Carlsen and Anand. Many of his works are preserved in the permanent collections of the Museum of Modern Art in New York and the Victoria & Albert Museum in London, among others. With the 2014 exhibition 'Time Machines: Daniel Weil and Art of Design', the Design Museum celebrated Weil's career to date. «Chess is a sport and a game of thrones» (Daniel Weil) «All artists are not chess players – all chess players are artists.» (Marcel Duchamp)



Lotto No. 16

A ‘Torchon’ coffee table prototype, designed and manufactured by Studio Superego,

Stima:

EUR 8.000,- a EUR 12.000,-

Milan / Italy, 2017, transparent acrylic glass construction reduced to basic geometric shapes, shimmering in different colours depending on the incidence of light. Dimensions: height c. 40 cm, diameter c. 60 cm. Slight signs of age and use, scratches and abrasions. (MHA)

Prototype for the limited edition of 9 examples.

With original certificate.



Lotto No. 17

A “Dalmare” chair prototype, designed by William Sawaya

Stima:

EUR 7.000,- a EUR 9.000,-

2009, for Sawaya & Moroni, Italy, steel legs, carved plywood, gold finish, signed and dated, dimensions: height c. 82 cm, width c. 47 cm, depth c. 55 cm, height of seat c. 46 cm. Slight signs of age and wear, scratches and abrasions. (MHA)

Prototype

Provenance:

Sanziany Collection & Rasumofsky Palace



Lotto No. 18

A ‘Glacialis’ coffee table prototype, designed by Marco Pettinari,

Stima:

EUR 9.000,- a EUR 12.000,-

manufactured by Studio Superego, Milan / Italy, 2017, transparent acrylic glass construction reduced to basic geometric shapes, shimmering in different colours depending on the incidence of light. Engraved: “Marco Pettinari”. Dimensions: height c. 43 cm, width c. 100 cm, depth c. 100 cm. Slight signs of age and use, scratches and abrasions. (MHA)

Prototype and only one made with this shape and colour.

The Glacialis model is a limited edition of 9 examples.

With original certificate.



Lotto No. 19

A recliner, designed by Xaver Sedelmeier,

Stima:

EUR 5.500,- a EUR 7.500,-

Germany 2020, natural oak, sheet metal sheathing, titanium galvanised, loose bolster with black leather, signed and dated: xaver 2020, height c. 37 cm, c. 180 cm x 50 cm. (DRAX)

A unique item. With certificate.

«Xaver Sedelmeier covers a chaise longue and a chair with a sheet metal spread. The elegant oak frames create an exciting dialogue with the sheet metal material. Spreads are usually used to protect against dirt or wear and tear, or as a decorative element. Sedelmeier's spreads add an aspect of irrational protection to this concept. Like an inorganic shell, the sheet metal covers the oakwood to ward off negative influences. His works, made from timeless clear elements, are symbolic of an emotional immune defence and resilience. At the same time, the decorative combination of two fundamentally different materials conveys a kind of aesthetic protection. A guiding principle that was already inscribed in Sedelmeier's 'Shieldwork'.

(Hansjörg Fröhlich)



Lotto No. 20 +

A prototype of the rare “Gradient Fauteuil” lounge chair, designed by Philipp Aduatz

Stima:

EUR 8.000,- a EUR 12.000,-

2021, manufactured by Philipp Aduatz in collaboration with incremental3d 2021, 3D-printed, dyed concrete reinforced with steel, blue and white design. Dimensions: height c. 102 cm, width c. 108 cm, depth c. 95 cm. Slight signs of age and traces of use. (MHA)

From the limited edition of 8 examples plus 2 épreuves d'artiste.

Prototype.

Its sculptural design is achieved by means of an innovative, digital production technology. This makes it possible to print extremely detailed concrete geometries in 3D within a very short period of time. The aim is to use the technology developed by incremental3d for a complex free-form design by Philipp Aduatz and thus to demonstrate new possibilities in the creation of complex shapes applied to furniture design. 3D concrete printing is a new and innovative manufacturing technology that makes it possible to print very large, complex structures in construction and design within a short time while taking ecological and economic aspects into account. The strategy is to apply the concrete colour directly into the nozzle during the printing process, thus reducing labour, waste and time delays. This enables a coloured design in the concrete that is applied locally point by point and not globally, as was only possible in the past. In image processing, the colour gradient of an image is one of the fundamental building blocks.

«For many years I have been obsessed with the concept of a colour gradient. To me, it reflects elegance and harmony. I believe that the colour gradient is a fundamental design principle in relation to the perception of the environment and its digital reflection. It has a mathematical aesthetic and precision that I have always admired. With this project, I want to combine the design of the colour gradient with various functional aspects through the use of innovative manufacturing technologies.» (Philipp Aduatz, 2021)

With original certificate.



Lotto No. 21

A unique armchair / cork chair mod. LC2-Threads, designed and manufactured by Gabriel Wiese

Stima:

EUR 3.000,- a EUR 4.000,-

2009-2024, steel construction with inlaid seat and back upholstery made from leftover threads. Dimensions: height c. 71 cm, width c. 78 cm, depth c. 72 cm. Slight signs of age and use (MHA)

Unique piece.

With original certificate. Issued on 26.07.2024.

Objects by Gabriel Wiese are preserved in various museums and renowned collections such as Barbier-Mueller. Gabriel Wiese lives and works in Saalfeld.



Lotto No. 22

A chair mod. Post Steltman, designed by Alessandro Guerriero

Stima:

EUR 3.200,- a EUR 4.000,-

2010, for Alchimia Redesign Collection, polychrome acrylic glass construction reduced to basic geometric shapes. Signed. Height c. 70 cm, width c. 70 cm, depth c. 50 cm. Slight signs of age and use, scratches and abrasions. (MHA)

Unique piece.

Alessandro Guerriero redesigned the chair for the Alchimia Redesign collection. The present design is a tribute to Gerrit Rietveld' famous Steltman chair.

Each chair from this series is unique due to its individual colour design.



Lotto No. 23

Two Primitive coffee tables from the Newanderthal series, for Studio Superego,

Stima:

EUR 5.000,- a EUR 8.000,-

Milan / Italy, 2022, sculptural block-like construction made of handmade polyurethane painted with a special latex paint to achieve a resistant and soft rubber-like effect. Marked with emblem and inscription «Newanderthal». Dimensions: height c. 40 cm, length c. 120 cm, depth c. 80 cm. Slight signs of age and use, scratches and abrasions. (MHA)

Unique piece from the 'Newanderthal' series, which is a tribute to human history from the Stone Age to the present day.



Lotto No. 24

A Green Model armchair, designed by Piero Gilardi

Stima:

EUR 4.000,- a EUR 6.000,-

2012, for Gugliermetto Experience, sculptural construction in the form of a green malachite rock emerging from the sea after an eruption, forming a rock flower washed by the waves and creating a space for one person. Piero Gilardi brings the natural element back into the home and moulds it into a comfortable and impressive armchair. Structure and insert made of plywood and PVC. Body made of polyurethane, completely hand moulded. Dimensions: height c. 90 cm, width c. 120 cm, depth c. 100 cm. Slight signs of age and use, scratches and abrasions. (MHA)

No. 19 from the limited edition of 30 examples.

With original certificate.

Lotto No. 25

A unique piece / installation 'Nabel der Welt', designed by Udo Breitenbach (designer), Frauke Pfeuffer (product designer),

Stima:



EUR 6.000,- a EUR 9.000,-

2022, multi-part installation consisting of a gold-coloured locating arrow with a window-shaped opening, neighbouring 'Selfie Point'. Dimensions: locating arrow height c. 250 cm, width c. 180 cm, depth c. 4 cm, diameter of the window-shaped opening c. 90 cm, base plate 'Selfie Point' diameter c. 90 cm. Slight signs of age and traces of use. (MHA)

Unique piece

The design installation was created for the Kunstbiennale Schwabach 2023. Passers-by were able to photograph themselves in front of, or behind, the 'navel of the world' and thus become the navel of their own world.

Frauke Pfeuffer:

Graduate product designer

Product design studies in Münster and industrial design in Johannesburg (RSA)

Design and product development at Haba/Wehrfritz: design of children's furniture and wooden toys;

Head designer at Räder Wohnzubehör GmbH in Bochum: design of home accessories, trade fair and catalog design;

living in Würzburg since 1996 and working freelance: projects in the public sector for the Bavarian State Forests, exhibition pavilions at the State Garden Show 2018;

Room of Silence in the Women's Clinic at the University Hospital of Würzburg, projects in the field of graphic and product design;

Study of Master of Zukunftsdesign, HS, Coburg, Germany

Udo Breitenbach:

1986: graduated as a communication designer, in Würzburg;

from 1993: freelance work as a designer;

1993: first exhibition with Objekt Trouvé, Galerie Westendorf, Winterhausen;

1994 / 1996: «EXPositionen», evidence collection work at the time of reunification, Bauhaus Dessau / Galerie Pankow, Berlin;

from 1998: member of the artist group SpessART, participation in numerous national and international exhibitions;

2009: «FARBE+RAUM - BauhausMeister Alfred Arndt» in the Bauhaus ensemble Probstzella;

from 2009: lender for Bauhaus exhibitions in Venice, Zurich, Berlin, Bonn, Munich, Jena, Erfurt, Bürgel, Freudenberg, Aschaffenburg;

2009: art campaign «HermesRettung»;

2010: co-initiator of the Ernst Ludwig «KirchnerHAUS-Museum Aschaffenburg» 2015/16 «bauhaus, #allesistdesign», exhibits from the

Bauhaus collection Breitenbach in the Vitra Design Museum and in the Bundeskunsthalle Bonn;

2016: on the occasion of the 100th anniversary of DADA, exhibition «1. Aschaffenburg ab_DADA-Messe» exhibition at Galerie L 17,

Aschaffenburg;

2016-2017: «Moderne am Main - Bauhaus im Spessart», RAUCH-Museum, Freudenberg;

2018: «ZeitSPRÜNGE- Dialoge zur Kulturgeschichte Europas» with Siegfried Rischer, Kulturtag Aschaffenburg;

2019 «1. Würzburger ab_DADA-Messe»;

2020: «CoRoNaDADA - 1. Weimarer ab_DADA-Messe», Galerie Markt 21; 5th Triennale Franken with the motto «Wahrheit» (Truth) 02.07 - 05.09.2021, Kunsthalle

Kunsthalle „Schweinfurt, 2022: „die gAnZe WaHrHEiT“, VKU-Galerie, Würzburg;

2023: Winner of the Artprice „Make Friends AND Art“, Kunsstation Kleinsassen



Lotto No. 26

An “In the Mood for Love” chaise longue, designed by Jing Song,

Stima:

EUR 6.000,- a EUR 9.000,-

Austria 2023, solid wood substructure with bent plywood, cold foam upholstery, moulded, fleece cover, red leather cover, with label: Living Sculpture/IN THE MOOD FOR LOVE/Song Jing/Designed and handmade in Vienna 2023, length c. 210 cm, width c. 75 cm, height c. 78 cm. (DRAX)

A unique item. Part of the Living Sculpture concept.

The Prototype was exhibited in:

«Die ungezähmten Haare der Großmutter», Sotheby's Vienna 2021.

“You don't do that. Who or what is sticking out the tongue? The tongue symbolises trust in life, being untamed and the carnality of being human. Because the physical perception through the tongue, be it in a kiss or when eating, is one of the most immediate human feelings.” (Jing Song)



Lotto No. 27

“Whippet Bench”, designed by Radi Designers* (Claudio Colucci, Florence Doléac, Laurant Massalou, Olivier Sidet and Robert Stadler),

Stima:

EUR 5.000,- a EUR 7.000,-

France 2000, fibreglass over steel construction, painted in RAL 4006 «lilac», height c. 60 cm, length c. 150 cm, depth c. 80 cm, seat height c. 47 cm. (DRAX)

From the limited edition of 30 + 5 EA examples, all finished in different RAL colours.

Provenance:

Klaus Engelhorn Collection, Vienna, ordered in this colour and bought directly from the designers.



Lotto No. 28

A “Dexteria” chest of drawers, designed by Philippa von Bastha,

Stima:

EUR 3.000,- a EUR 5.000,-

Switzerland 2023, fibreglass, covered with leaf gilding, varnished, signed and dated, height c. 150 cm, width c. 79 cm, depth c. 50 cm. (DRAX)

A unique item.



Lotto No. 29

An Among settee, designed by Wagenschlag in collaboration with Alessandro Giorgi * 2022,

Stima:

EUR 12.000,- a EUR 15.000,-

manufactured by Wagenschlag 2022, sculptural construction made of beech, birch plywood, feet made of lacquered black steel, painted with graphite pencil by the artist Alessandro Giorgi in 8 days. Dimensions: height c. 47 cm, length c. 260 cm, depth c. 55 cm. Slight signs of age and use. (MHA)

Spontaneous Overload Among was created by chance. The idea of a caterpillar and then an arrangement of mythical creatures preceded the final design. Every detail is food for thought. But where does it end? Born in Italy in 1989, artist Alessandro Giorgi grew up in a small fishing village on the southern coast of Sicily. Numerous sojourns in various European cities eventually led him to turn his passion into a profession. His works are records of unconscious thoughts and spontaneous compositions. Small drawings and larger compositions are punctuated with hybrid figures and non-human life forms moving and retreating into watery grounds, ready to capture a moment before an inevitable change occurs. Through his work, Alessandro Giorgi aims to connect seemingly separate elements to reveal the relationships of mutual influence and dependence organising both our ecosystem and our lives. He wants the viewer to lose their bearings, in search of an unfamiliar logic, a new order, to reflect on their own identity and its limits. Alessandro Giorgi lives and works in Munich.



Lotto No. 30 +

A Zebra Chaise, designed and manufactured by Nawaaz Saldulker,

Stima:

EUR 5.000,- a EUR 6.500,-

South Africa 2024, steel frame, hand-woven weave of plastic straps extruded from waste material, seat height c. 40 cm, length c. 115 cm, width c. 40 cm. (DRAX)

Unique example of the two-specimen edition of this design. With certificate.

This lounge was presented in the VIP Lounge at TEFAF in Maastricht in 2024.

The black and white fabric refers to the 'yin and yang' symbol as the best example of two opposing things that are in harmony with each other, perfectly balancing the opposites.



Lotto No. 31 +

A Black Mamba stool, designed and manufactured by Nawaaz Saldulker,

Stima:

EUR 3.400,- a EUR 4.500,-

South Africa 2020, steel frame, hand-woven mesh of plastic ribbons extruded from the caps of used milk bottles, height c. 35 cm, c. 60 x 30 cm. (DRAX)

A unique item. With certificate.

Another example of this concept was part of the exhibition «Paris Animal - Histoire et récits d'une ville vivante», Paris, Pavillon d'Arsenal 2023.

The underlying concept is inspired by the biological processes of insects and is based on the demand of biomimetics to translate the ingenuity of nature into contemporary product design in order to find smarter solutions that are beneficial for both people's physical health and the planet.



Lotto No. 32

A 'Helioendimio' double bed from the 'Arte dell'abitare' series, designed by Luigi Ontani

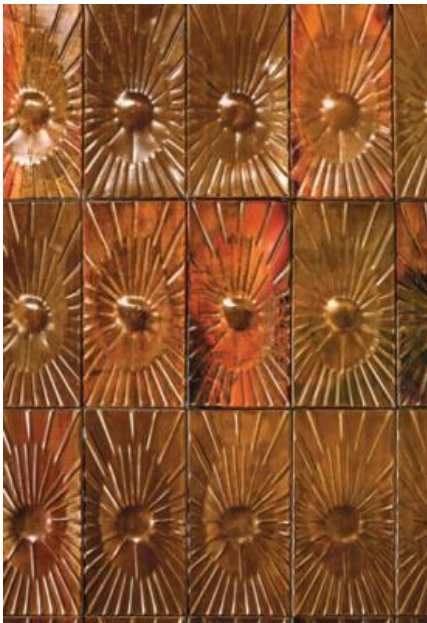
Stima:

EUR 12.000,- a EUR 16.000,-

1982, for on Mirabili, Florence, Italy, sculptural, relief-moulded, carved and gilt wooden headboard depicting a radiant sun with eye, wings, rays and omega symbol. Sculptural, relief-moulded, carved and silvered wooden footboard. Eye made of white and green backlit methacrylate. Slatted frame and bedspread. Monogrammed on the back of the headboard. Dimensions: height c. 98 cm, width c. 178 cm, depth c. 210 cm. Signs of age and use, scratches and abrasions, without guarantee for electrical fitting. (MHA)

No. 33 from the limited edition of 99 examples.

Cf. Lit.:
«Epoca», vol. 38, 1987, s. p.; Nuove abitazioni in Italia, a cura di S. San Pietro, M. Casamonti, vol. I. Edizioni L'Archivoltò, Milan 1993, p. 51; S. Camilli, A. Branzi, Tra pittura e design, EAD, Florence 1997, p. 32



Lotto No. 33

528 copper wall tiles, designed by Edit Oborzil and Tibor Jeney

Stima:

EUR 18.000,- a EUR 24.000,-

c. 1968 for the Hotel Helikon at Lake Balaton, Hungary, artistic rectangular copper wall tiles with an abstract sun motif in a concave, convex form or with a round recess in the centre. Dimensions of each element: height c. 20 cm, width c. 10 cm. The set includes a total of 528 individual elements. When assembled, they reach a height of c. 220 cm and a width of c. 510 cm. Each element has 8 holes on the side for mounting. The elements can be freely combined. Please note that the individual elements are disassembled. The photo of the wall panel is a sample photo. Signs of age and use, scratches and abrasions, partly with small deformations, residues. (MHA)

Edit Oborzil was born in Budapest in 1921 and died in 1996. During her studies she met her future husband, the craftsman Tibor Jeney. After graduating from the Academy, Oborzil became a versatile artist. She was also commissioned to design the copper panels for the interior of the legendary Hotel Helikon at Lake Balaton in Hungary. The hotel interior was also designed by other renowned Hungarian artists of the 1960s and 1970s, including the painter Gabor (Gabriel) Szinte and the ceramist Janos (John) Majoros. The hotel was built in 1968-1971 and was the biggest investment of the socialist government. The Helikon Hotel in Keszthely opened its doors on 9 May 1971 and was considered the most elegant and modern hotel on Lake Balaton at that time. After the reunification of Germany and the resulting changes in Eastern Europe, the hotel remained in operation until 2016 before closing for renovation work. The owner had been a regular guest of the hotel himself and was able to witness the exceptional style and beauty of its interior.

Provenance:
Formerly part of the interior of the Hotel Helikon at Lake Balaton in Hungary.



Lotto No. 34

A “Cactus” clothes stand, designed by Guido Drocco – Franco Mello,

Stima:

EUR 3.600,- a EUR 4.800,-

1971, for Gufram, Italia, polyurethane, green rubber varnish, height c. 168 cm, diameter c. 72 cm. (DRAX)

From the 1986 edition.

Provenance:

Private Ownership, Italy - acquired in the 1980s

Lit.:

Ph. Decelle - D. Hennebert - P. Loze, L'Utopie du Tout Plastique, Brussels 1994, p. 103 - A. Bangert, Italian Furniture Design, Munich 1988, p. 100.



Lotto No. 35

Two “Uchiwa III” wall lamps, designed by Ingo Maurer

Stima:

EUR 4.000,- a EUR 6.000,-

1973 / 1975, for Design M. Munich, Germany, construction in the form of a fan made of rice paper, bamboo stick, wired for 1 light each. Height c. 75 cm, width c. 55 cm, depth c. 15 cm. Signs of age and use, scratches and abrasions, fan with isolated minor tears, without guarantee for electrical fitting. (MHA)



Lotto No. 36 +

An "Octopus" table, Giancarlo Micheli* and Tura,

Stima:

EUR 5.000,- a EUR 9.000,-

Italy c. 1988, wooden corpus covered with off-white parchment, the watercolour painting on parchment with sea motifs by the Roman artist Giancarlo Micheli, lacquered, height 75 cm, diameter 140 cm. (DRAX)

A unique piece and one of a few objects by Tura in combination with painting.

Provenance:

From the Aldo Tura Archive, Lazzate, Italy.



Lotto No. 37

A pair of appliques, designed by Valentina Giovando*,

Stima:

EUR 4.000,- a EUR 5.500,-

manufactured by Valentina Giovando Studio, 2004, Sarzana, Italy, moulded crystal glass, synthetic resin, metal, signed, height c. 105 cm, width c. 28 cm. (DRAX)

From a limited small-scale series of handmade specimens. With certificate.



Lotto No. 38

A coffee table, designed by Valentina Giovando*,

Stima:

EUR 4.000,- a EUR 6.000,-

manufactured by Valentina Giovando Studio, 2004, Sarzana, Italy, wooden corpus, copper, galvanised metal applications in the shape of tendrils, signed, height c. 50 cm, diameter c. 81 cm. (DRAX)

From a limited small-scale series of handmade specimens. With certificate.



Lotto No. 39

A sideboard, designed by Carlo Rampazzi*,

Stima:

EUR 9.000,- a EUR 15.000,-

c. 1985, for Colombostile, Italy, wooden corpus, green marbled top, the front with green and blue painted square decor, sculptural legs with inlays made of several woods, gold painting, height c. 93 cm, length c. 144 cm, depth c. 53 cm. (DRAX)

From a limited small-scale series of handmade furniture.

Provenance:

Private Collection Italy, purchased from the artist in around 1985.

Lotto No. 40

Pyramid-shaped furniture, designed by Carlo Rampazzi *,

Stima:

EUR 4.000,- a EUR 8.000,-



manufactured by Tura, Italy 1980, wooden corpus, covered with goat skin, gold and ochre patinated surface, lacquered, handles in the form of a vegetal brass applique, brass legs, height c. 182 cm, width c. 160 cm, depth c. 80.5 cm. (DRAX)

Unique piece.

Provenance:

Private Collection Italy, purchased from Tura in around 1980.



Lotto No. 41 +

A “Momiji” shelf, designed by Sakura Adachi,

Stima:

EUR 4.000,- a EUR 6.000,-

2012, for Tura, Italy, maplewood, stained, ivory-coloured parchment, one module c. 20 x 47 x 41 cm. (DRAX)

Consisting of six modular individual elements of hexagonal shape, which can be used and combined in a number of ways.

From a limited edition.



Lotto No. 42 +

A large wall mirror, Tura,

Stima:

EUR 3.600,- a EUR 4.800,-

Italy 1980, rounded wooden frame covered with red dyed parchment, varnished, c. 220 x 140 cm, depth 5 cm. (DRAX)

A unique piece.

Provenance:

From the Aldo Tura Archive, Lazzate, Italy.



Lotto No. 43

A large chandelier and a set of six wall appliques / wall lamps, second quarter of the 20th century

Stima:

EUR 10.000,- a EUR 15.000,-



from the Bauhaus period, sculptural construction with metal pendulum, lights made of transparent, hand-bent borosilicate glass tubes painted with whitening and attached to a steel holder, with three and two porcelain fittings. Dimensions of ceiling lamp: height c. 130 cm, width c. 80 cm, depth c. 20 cm; dimensions of each applique: height c. 50 cm, width c. 36 cm, depth c. 24 cm. Signs of age and use, scratches and abrasions, some residues, without guarantee for electrical fitting. (MHA)

Provenance:

Originally part of the interior of a medical institute in Budapest.



Lotto No. 44

A cabinet, designed by Marcel Breuer

Stima:

EUR 6.000,- a EUR 9.000,-

1927, for Desta, Berlin (attributed), box-shaped wood frame construction, the front with two doors, yellow-green paint, nickel plated sheet metal frame, foot with original linoleum. Dimensions: height c. 150 cm, width c. 120 cm, depth c. 60 cm. Professionally restored condition with signs of age and use, body with original yellow-green paint, doors professionally restored. (MHA)

Cf. Lit.:

Marcel Breuer Design, p. 96f.; Deutsche Stahlrohrmöbel, p. 57.

Provenance:

Private Collection, Germany.



Lotto No. 45

A cabinet, designed by Marcel Breuer

Stima:

EUR 6.000,- a EUR 9.000,-

1927, for Desta, Berlin (attributed), box-shaped wood frame construction, the front with two doors, yellow-green paint, nickel plated sheet metal frame, foot with original linoleum. Dimensions: height c. 150 cm, width c. 120 cm, depth c. 60 cm. Professionally restored condition with signs of age and use, body with original yellow-green paint, doors professionally restored. (MHA)

Cf. Lit.:

Marcel Breuer Design, p. 96f.; Deutsche Stahlrohrmöbel, p. 57.

Provenance:

Private Collection, Germany.



Lotto No. 46

A large carpet, School of Jacques-Emile Ruhlmann,

Stima:

EUR 4.000,- a EUR 6.000,-

probably France, second quarter of the 20th century, wool, oval shape, decoration with floral motifs and reduced to basic geometric shapes in typical Art Deco design on light-coloured ground, surrounded by a dark border. Size c. 287 cm x 200 cm. Signs of age and use. (MHA)



Lotto No. 47

A pair of bentwood chairs mod. no. 6, designed by August Thonet,

Stima:

EUR 6.000,- a EUR 10.000,-

Vienna 1850, manufactured by Gebrüder Thonet in around 1870, bent beechwood, stained, foot ring, upholstered (replaced) seat and backrest medallion, stamped in a circle: THONET, height c. 93 cm, width c. 44 cm, depth c. 54 cm, height of seat c. 45 cm. (DRAX)

Cf. Lit.:

Sitz-Gelegenheiten. Bugholz-und Stahlrohrmöbel von Thonet, Germanisches Nationalmuseum Nürnberg, 1989, p. 196, no. 29 (chair mod. no. 13), pp. 188–191, nos. 11–17 (Liechtenstein model), p. 193, no. 22 (chair mod. no. 9)

This design, albeit in a slightly heavier and stockier version, was first included in the Thonet programme in 1859 as mod. no. 13 and presented at the 1862 World's Fair in Paris. The "eye" used at the leg forks goes back to the idea of decorative elements, as Thonet first used them on the Liechtenstein chairs. In the present example, however, it is reduced from decorative carving to the formal minimalism of a loop. In a similar form to mod. no. 6, we also find this spandrel solution on the London World's Fair chair from 1851.



Lotto No. 48

A rare armchair, Eugène Printz,

Stima:

EUR 20.000,- a EUR 30.000,-

France c. 1930, upholstered, sculptural black-stained wood frame construction on four legs, with slightly bent backrest, rounded armrests, the latter slightly concave in the front, the legs with arched side connections. The backrest and seat completely covered with light-coloured fabric. In restored condition with signs of age and use, scratches and abrasions, the cover / upholstery professionally replaced a long time ago. Dimensions: height c. 80 cm, width c. 50 cm, depth c. 80 cm. (MHA)

With a certificate issued by Jean-Marc Maury, Paris, 23 October 2018.

Paris-born Eugène Printz (1889 - 1948) was a French interior decorator and furniture designer. Printz worked in his father's workshop on Rue du Faubourg Saint-Antoine in Paris. Later he set up his workshop on 12 rue Saint Bernard in Paris, where he made cabinets, carpets, drawings and paintings. In 1930, he designed the interior of the boudoir of the Princesse de la Tour d'Auvergne in the Château de Grosbois, the private office of Jeanne Lanvin, the reception salon of Field Marshal Lyautey and the interior of the Musée de la France d'Outre-Mer on the occasion of the Paris «Exposition Coloniale» in 1931. He later opened his own gallery on 81 rue de Miromesnil in Paris. Further commissions followed in Great Britain, Belgium, the USA and Mexico. Shortly before the beginning of World War II, Eugene Printz, Jules Leleu and René Prou, among others, founded the group Décor de France. After the war, his Eugene Printz furniture was produced in a limited edition.

Cf. Lit.:
Gaston Derys, «Le Siège,» Mobilier et Décoration, October 1936, p. 384 (similar model); Guy Bujon and Jean-Jacques Dutko, E. Printz, Paris, 1986, p. 203 (similar model)

Provenance:
Sale, Camard, Galerie Vallois Paris, acquired from the above by the present owner.



Lotto No. 49

Two variants of armchair mod. Ouef, Jean Royere

Stima:

EUR 15.000,- a EUR 20.000,-

(attributed), France c. 1950, four-legged structure with black varnished wooden legs in brass sabots, replaced upholstered yellow-green velvet cover. With slightly different dimensions (lady's and gentleman's chair). Dimensions: height c. 85 cm, width c. 75 cm, depth c. 80 cm, height of seat c. 40 cm. Signs of age and use, scratches and abrasions, the cover / upholstery replaced a long time ago. (MHA)

Cf. Lit.:
Catherine de Beyrie, Stéphane de Beyrie, Jacques Ouais (ed.) - Jean Royere, Galerie De Beyrie 2000, p. 62 (a similar model)

Provenance:
Private Ownership, Italy, acquired by the current owner in France c. 15 years ago.



Lotto No. 50

A “le mie terre” table lamp, designed by Gio Ponti

Stima:

EUR 4.000,- a EUR 6.000,-

c. 1929, manufactured by Richard Ginori, Doccia, ceramic, glazed, blue brushed signature and model number: «Ginori / 1175 / Gio Ponti / Made in Italy». Fitted for electricity, wired for one light and one lamp shade, wall with floral decoration. Dimensions of the vase / lamp: height c. 32 cm, diameter c. 30 cm, total height with lamp shade c. 58 cm. Signs of age and use, scratches and abrasions, partly darkened areas / residues, partly slightly chipped. (MHA)

Cf. Lit.:

L. Manna, Gio Ponti, Le maioliche, Milano 2000, no. 76, p. 210 - factory catalogue Societa Ceramica Richard Ginori, Ceramiche Moderne d'Arte, Capizzano, Milan 1930, p. 88 - cat. D. Matteoni, Gio Ponti: il fascino della ceramica - fascination for ceramics, Milan 2011, p. 126

Provenance:

Private Collection, Austria.



Lotto No. 51

A rare coffee table, designed by Pietro Chiesa

Stima:

EUR 6.000,- a EUR 8.000,-

c. 1935, for Luigi Fontana, Italy, classic, pared-down, three-legged construction made of glass, brass and rosewood. The underside with stamp: «Luigi Fontana & C. TORINO 2 DIC 1935». Dimensions: height c. 47 cm, diameter c. 100 cm. Signs of age and use, scratches and abrasions, partly residues. (MHA)



Lotto No. 52

A two-arm wall applique, Serge Mouille*,

Stima:

EUR 6.000,- a EUR 9.000,-

France 1950s, aluminium shades with black coated exterior and white coated interior, black lacquered iron rods, brass hinge, long arm c. 126 cm, short arm c. 103 cm, height c. 90 cm. (DRAX)

Lit.:

Jean Prouvé et Serge Mouille. Deux maîtres de metal, cat. Anthony Delorenzo, NY & Christine Counord, Paris, 1985, p. 132. - Serge Mouille luminaires 1953 – 1962, Galerie 1950, Paris 1983, p. 18 - P. E. Prelus, Serge Mouille. A French Classic, 2006, p. 170.



Lotto No. 53

An 8-part set of “CP1” wall appliques, designed by Charlotte Perriand,

Stima:

EUR 4.000,- a EUR 7.000,-

France c. 1955/60, black and white lacquered sheet iron, movable facing, plastic sockets, c. 16.3 x 12.5 cm, depth 5.5 cm. (DRAX)

Lit.:

Charlotte Perriand: Un Art de Vivre, Musée des Art Décoratifs, Paris 1985, p. 52 - P. Favardin, Les Décorateurs des Années 50, Paris 2002, p. 137 - Charlotte Perriand, Centre Georges Pompidou, Paris 2005, p. 155 - J. Barsac, Charlotte Perriand. Complete Works, vol. 3, 1956–68, Paris 2017, pp. 106/107 - S. Cherruet-J. Barsac, Charlotte Perriand: Inventing a New World, Fondation Louis Vuitton, Paris 2019, p. 335



Lotto No. 54

A room divider, designed by Le Corbusier*,

Stima:

EUR 3.600,- a EUR 5.000,-

1955/60, for the Unités d'Habitation in La Cité Radieuse, Firminy, oak plywood, sliding doors, made of white and light grey laminated wood on both sides, height 140 cm, length 185 cm, depth 55 cm, depth of the worktop 33 cm. (DRAX)

The unit functions as a room divider between the kitchen and the dining area, which together with the living area form an open-plan space. The room divider can be used on both sides. It was only produced for the furnishings in Firminy.

Provenance:

Klaus Engelhorn Collection, Vienna

Cf. Lit.:

G. Monnier, Le Corbusier, Les Unités d'Habitation en France, Berlin 2002, ill. p. 159.



Lotto No. 55

A hallstand and leather container, Carl Auböck,

Stima:

EUR 3.000,- a EUR 5.000,-

Vienna c. 1948, for Werkstätten Carl Auböck, solid maplewood, walnut veneered side, seven hooks made of blackened solid brass, height c. 75 cm, width c. 100 cm, depth c. 18 cm. (DRAX)

A rare version with hat shelf. The leather container with a brass loop for hanging was designed for utensils such as brushes, gloves, etc.



Lotto No. 56

A rare coffee table (“Stecktisch”), Carl Auböck,

Stima:

EUR 5.000,- a EUR 7.000,-

Vienna 1949/50, round maplewood, rubber rings, round brass, brass caps, polished, glass top, stamped: Auböck Made in Austria, height 45 cm, 90 x 41 cm. (DRAX)

The table can be disassembled and reassembled using the plug-in system.

Lit.:

Die Kataloge der Werkstätte Carl Auböck, Vienna 2004, cat. no. 3907, p. 168, cat. 5063 - Aloï, Esempi di tavole - E. B. Ottillinger, Möbeldesign der 50er Jahre, Vienna 2005, p. 143, cat. 73 (later example).



Lotto No. 57

A tree table, Carl Auböck *,

Stima:

EUR 2.400,- a EUR 4.000,-

Vienna 1950 / 1952, walnut disc, flaring patinated brass legs with rubber sabots. With numbering (“8”) and hallmark “Made in Austria”. Dimensions: height c. 37 cm, length c. 63 cm, depth c. 30 cm. Signs of age and use, scratches and abrasions. (MHA)

Vgl. Lit.:

Arbeiten der Werkstätte Carl Auböck fotografiert 1948-2005, III/38



Lotto No. 58

A set of six chairs, Carl Auböck,

Stima:

EUR 5.000,- a EUR 8.000,-

Vienna c. 1950, bar iron, matt black varnished, rattan wickerwork, height c. 87 cm, width c. 44 cm, depth c. 57 cm, height of seat c. 45 cm. (DRAX)

Lit.:

Arbeiten der Werkstätte Carl Auböck - fotografiert 1948–2005, p. III/10, no. 37 - E. B. Ottillinger, Möbeldesign der 50er Jahre, Vienna 2005, p. 143, cat. 72.



Lotto No. 59

Two Art Deco wall appliques, designed and manufactured by J. & L. Lobmeyr,

Stima:

EUR 3.000,- a EUR 4.000,-

Vienna c. 1930, sculptural, classic, pared-down constructions made of transparent crystal glass in the form of rays, each wired for three lights, metal mounts. Dimensions of each wall lamp: height c. 32 cm, width c. 36,5 cm, depth c. 28 cm. Professionally restored condition with slight signs of age and use, without guarantee for electrical fitting.

Provenance:

Private Collection Austria, professionally restored by J. & L. Lobmeyr, Vienna, at the current owner's behest in 2021.



Lotto No. 60

A magnificent Art Deco chandelier, designed and manufactured by J. & L. Lobmeyr,

Stima:

EUR 8.000,- a EUR 12.000,-

Vienna, c. 1930, sculptural, classic pared-down construction with spherical elements and a total of 12 arms in the form of rays made of transparent crystal glass, wired for 12 lights, metal mounts. Dimensions of the chandelier: height c. 140 cm, diameter c. 75 cm. Professionally restored condition with slight signs of age and use, without guarantee for electrical fitting. (MHA)

Provenance:

Private Collection Austria, professionally restored by J. & L. Lobmeyr, Vienna, at the current owner's behest in 2021.



Lotto No. 61

A rare bookshelf, designed by Richard Neutra

Stima:

EUR 4.000,- a EUR 6.000,-

1960s, manufactured by Victoria Möbel, Switzerland. shelving wall consisting of 3 compartments with 4 iron uprights, 13 shelves (each c. 94 cm x 23 cm), 4 cupboards (dimensions of each item c. 90 cm x 56 cm x 35 cm), rosewood veneer; overall dimensions: length c. 300 cm, height-adjustable from c. 200 cm to c. 250 cm, depth c. 30 cm. (MHA)

Suited for wall and ceiling mounting. The elements can be freely combined. This model was used exclusively on commission for some of Richard Neutra's buildings in Europe. It was never produced in series.

The present item is subject to conservation legislation (ASB).



Lotto No. 62

A 'Sujet Colombe' (Dove Subject) jug, designed by Pablo Picasso

Stima:

EUR 5.000,- a EUR 7.000,-

1959, for Madoura Plein Feu, sculptural ceramic construction with abstract dove shape. White-bodied with blue and black engobe painting and incised decoration on glazed white enamel ground. The underside numbered in handwriting and inscribed «Edition Picasso» «Madoura» and «129/500», with the impressed factory mark «Madoura Plein Feu» and «Edition Picasso». Slight signs of age and use, scratches and abrasions. (MHA)

No. 129 from the limited edition of 500 examples.

Cf. Lit.:

A. Ramié, no. 435



Lotto No. 63

A large Serpentine sofa from the New York series with footstool / pouffe, designed and manufactured by Vladimir Kagan

Stima:

EUR 6.000,- a EUR 8.000,-

for Directional, USA, classic, pared-down, upholstered wood frame construction, light-coloured textile covering, marked. Dimensions of the sofa: height c. 77 cm, seat height c. 40 cm, length c. 360 cm, depth c. 140 cm; dimensions of the pouffe: height c. 35 cm, diameter c. 125 cm. Signs of age and use, scratches and abrasions. (MHA)



Lotto No. 64

Two imposing wall lamps / wall appliques for Hotel Bristol in Bolzano, designed by Flavio Poli

Stima:

EUR 5.000,- a EUR 7.000,-

1954, manufactured by Seguso Vetri d'Arte, Murano, Italy, box-shaped brass construction, back with metal plate, pendants made of thick-walled transparent and pink dyed glass decorated in relief, each with four E14 sockets. Dimensions of each wall lamp: height c. 51 cm, width c. 31 cm, depth c. 11.5 cm. Signs of age and wear, scratches and abrasions, without guarantee for electrical fitting. (MHA)

Flavio Poli (1900-1984) was a glass designer based in Venice, Italy. Poli joined Seguso Vetri d'Arte as a design consultant in 1934. During his time there, he worked with both Angelo and Archimede Seguso. During Poli's collaboration with Seguso, the company exhibited pieces at the 1935 World's Fair in Brussels, the 1936 Triennale in Milan and the 1937 World's Fair in Paris. However, some of his most impressive works date from the 1950s. Poli's work was recently displayed in an exhibition organised by Seguso Vetri d'Arte at the Design Museum in Ghent.

Provenance:

Originally part of the interior of Hotel Bristol in Bolzano, Italy.



Lotto No. 65

Two two-seater sofas, designed by Norman Bel Geddes,

Stima:

EUR 5.000,- a EUR 7.000,-

USA c. 1949, four-legged wood frame constructions, beechwood legs, upholstered green textile covering. Dimensions of each item: height c. 77 cm, width c. 110 cm, depth c. 86 cm, height of seat c. 40 cm. Signs of age and use, scratches and abrasions. (MHA)



Lotto No. 66

An 'AUSSERHALB' pictorial carpet / tapestry, designed by Prof. Josef Schulz *

Stima:

EUR 7.000,- a EUR 9.000,-

1997, manufactured by Atelier Schulz, Vienna, abstract depiction with a polychrome colour scheme, wool. Label on the reverse: TAPISSERIE «AUSSERHALB» 145 x 491 cm 1997 ENTW. J. SCHULZ AUSFÜHRUNG ATELIER SCHULZ WIEN IN FREIER GOTISCHEN TECHNIK GEWEBT. KETTE: BW - GEZW. SCHUSS: 100 % SCHW. 8-9 FACH. FÄRBUNG: BESONDERS GUTE LICHTECHTHEIT U. MITTEN- GESICHERT. Size c. 145 cm x 491 cm. Signs of age and use. (MHA)

Josef Schulz (1933-2005) was an Austrian artist, painter, graphic designer, textile designer and university lecturer. He was a professor of Textile Design and Works and former head of the Master School of Tapestry at the Academy of Fine Arts in Vienna. "Josef Schulz graduated from the University of Applied Arts in Vienna with Prof. Wimmer-Wisgrill "Textiles and Painting", then worked freelance and as a teacher at the University of Applied Arts, before being appointed to the Academy of Fine Arts in Vienna in 1975. He was instrumental both in establishing the Institute for Textile Design as part of the training for art teachers, and in founding the Master School of Tapestry, which he directed from 1988 until his retirement in 2002. Schulz was a holder of the Grand Silver Decoration of Honour for Services to the Republic of Austria and the Cross of Honour for Science and Art 1st Class, the holder of a Silver Commander's Cross of the Province of Lower Austria as well as numerous awards. His works are preserved in domestic and foreign collections, in public institutions and museums as well as in private ownership." (https://www.akbild.ac.at/de/news/2005/event_1091, 16.07.2024)

Provenance:

Private Collection, Austria.



Lotto No. 67 +

A rare sideboard, designed by Edward Wormley

Stima:

EUR 5.000,- a EUR 7.000,-

c. 1955, for Dunbar Furniture, Berne, Indiana, USA, box-shaped eight-legged construction made of walnut wood, veneered, thin wooden bands, brass rods, solid wood legs, the front with four doors and four drawers. Dimensions: height c. 85 cm, width c. 180 cm, depth c. 47 cm. Signs of age and use, scratches and abrasions. (MHA)



Lotto No. 68

A coffee table, Giuseppe Scapinelli,

Stima:

EUR 7.000,- a EUR 9.000,-

Brazil c. 1960, sculptural construction with rectangular table top and side supports made of, inter alia, jacaranda wood in patchwork technique. Dimensions: height c. 40 cm, width c. 180 cm, depth c. 90 cm. Signs of age and use, scratches and abrasions. (MHA)

The Italian-born architect Giuseppe Scapinelli emigrated to Brazil in 1948 and settled in São Paulo. His career as a furniture designer began in the early 1950s. Soon thereafter, he opened his own furniture factory, where he produced many outstanding pieces with impeccable craftsmanship for special homes. His furniture production is marked by soft shapes and curved lines, futuristic elements and a distinctive identity. Scapinelli's expertise in ceramics, architecture and sculpture enabled him to become one of the most significant figures in Brazilian mid-century modernism, renowned for his innovative and elegant furniture designs.

The present item is subject to conservation legislation (ASB).



Lotto No. 69

Two rare lounge chairs mod. Costela, designed by Martin Eisler and Carlo Hauner

Stima:

EUR 7.000,- a EUR 9.000,-

c. 1950, for Forma Nova, Italy, sculptural, four-legged structure with metal legs and brass feet, bent, lamellar seat pans with walnut veneer. Dimensions of each item: height c. 81 cm, width c. 69 cm, depth c. 83 cm, height of seat c. 41 cm. Signs of age and use, scratches and abrasions the cover / upholstery replaced some time ago. (MHA)



Lotto No. 70

A lounge suite / suite of lounge furniture, Massimo Cotti,

Stima:

EUR 7.000,- a EUR 9.000,-

Italy c. 1960, freely combinable stacking constructions made of black lacquered metal, unattached seat and back cushions with textile coverings in diverse colours. The set consists of 5 elements. Dimensions of each item: height c. 53 cm, width c. 87 cm, depth c. 65 cm, height of seat c. 20 cm. Signs of age and use, scratches and abrasions. (MHA)



Lotto No. 71

A "Suora" floor lamp, designed by Carlo Mollino

Stima:

EUR 12.000,- a EUR 18.000,-

1947, for Galleria Colombari, Milan, 1990s, adjustable brass tube construction, parchment-like lampshade, marble base. Height c. 187 cm (adjustable), width c. 120 cm (adjustable), lamp base diameter c. 40 cm. Slight signs of age and use, scratches and abrasions, lampshade professionally renewed, without guarantee for electrical fitting. (MHA)

From the re-edition "Omaggio a Carlo Mollino".

Lit.:

Il mobili di Carlo Mollino, no. 62 and p. 223; Colombari, Carlo Mollino, p. 50f.

Provenance:

Private Collection Germany



Lotto No. 72

A large ceiling lamp, for Venini,

Stima:

EUR 5.000,- a EUR 6.500,-

Italy, golden metal construction with ceiling suspension, turned rods of champagne coloured transparent glass in diverse colours, wired for multiple lights. Dimensions c. 65 cm x 65 cm. Slight signs of age and use, scratches and abrasions, without guarantee for electrical fitting. (MHA)

As a result of the different characteristics of the glass rods, changes in the viewer's perspective produce different reflections and refractions of light.



Lotto No. 73

A rare, large floor lamp mod. 'LT320', designed by Carlo Nason

Stima:

EUR 8.000,- a EUR 12.000,-

c. 1960, for Mazzega, Murano, Italy, pared-down chromium plated metal construction, glass plates made of lightly dyed vaseline glass arranged in the form of an abstract cactus. Dimensions: height c. 125 cm, width c. 55 cm, depth c. 57 cm. Slight signs of age and use, scratches and abrasions, without guarantee for electrical fitting. (MHA)

An unusual model with rare colour design. No longer in production.



Lotto No. 74

A large ceiling lamp, designed by Ludovico Diaz de Santillana

Stima:

EUR 5.000,- a EUR 6.500,-

c. 1970, for Venini, Italy, golden metal construction with ceiling suspension, turned rods of champagne coloured transparent glass in diverse colours, wired for ten lights. Height c. 60 cm, diameter c. 70 cm. Slight signs of age and use, scratches and abrasions, without guarantee for electrical fitting. (MHA)

As a result of the different characteristics of the glass rods, changes in the viewer's perspective produce different reflections and refractions of light.



Lotto No. 75

A rare floor lamp, designed by Carlo Nason

Stima:

EUR 4.000,- a EUR 6.000,-

c. 1969, for Mazzega, Murano, Italy, sculptural construction made of structured glass, consisting of interlocking plates of smoke grey dyed and clear glass, attached to a blackened square metal plinth. Height c. 140 cm, width c. 25 cm, depth c. 25 cm. Slight signs of age and use, scratches and abrasions, without guarantee for electrical fitting. (MHA)

An unusual model. No longer in production.



Lotto No. 76

A table lamp, designed by Gio Ponti

Stima:

EUR 5.000,- a EUR 8.000,-

1966/67, for Venini, Italy, patinated copper, transparent and «lattimo» glass, height c. 45 cm, width c. 42 cm, depth c. 20 cm. (DRAX)

Cf. Lit.:

L. Licitra Ponti, Gio Ponti: The Complete Work, 1923–1978, Cambridge 1990, p. 230 (comparison)



Lotto No. 77

A cabinet / writing desk with integrated folding table, designed by Gio Ponti

Stima:

EUR 5.000,- a EUR 7.000,-

c. 1945, for Casa e Giardino, Milan, Italy, box-shaped wood frame construction, solid and veneered, brass fittings. Dimensions: height c. 195 cm, width c. 70 cm, depth c. 40 cm (closed) / 155 cm (open). Signs of age and use, scratches and abrasions. (MHA)

With an original certificate issued by the Gio Ponti Archive on 26.06.2023, certificate no. 23169.

Cf. Lit.:

Eugenio Gentili, Il mobile pieghevole, Domus, no. 207, March 1946, p. 28.



Lotto No. 78

An extensible dining table, designed by Helge Vestergaard Jensen

Stima:

EUR 5.000,- a EUR 7.000,-

1957, for Peder Pedersen, four legs, extensible teak construction, height c. 72 cm, depth c. 100 cm, width c. 140 cm (extensible to c. 187 cm). Signs of age and use, scratches and abrasions. (MHA)

Cf Lit.:

Mobilia 1957



Lotto No. 79

A 4-piece set of "Tongue" chairs mod. 3106, designed by Arne Jacobsen,

Stima:

EUR 6.000,- a EUR 9.000,-

1955, for Fritz Hansen, Denmark, nickel plated steel legs, moulded beech plywood seats, all items with manufacturer's logo and DANMARK, height c. 80 cm, width c. 42 cm, depth c. 47 cm, height of seat c. (DRAX)

Lit.:

C. Thau-K. Vindum, Arne Jacobsen, Copenhagen 2001, p. 394



Lotto No. 80

Two lounge armchairs mod. FK 6720, designed by Jørgen Kastholm & Preben Fabricius

Stima:

EUR 3.000,- a EUR 4.500,-

1965, for Kill International / Germany, four-legged structure made of chromium plated flat steel, unattached loose cushion, armrests with black leather cover. Dimensions of each armchair: height c. 78 cm, width c. 77 cm, depth c. 79 cm, height of seat c. 43 cm. Slight signs of age and use, slight patina. (MHA)

An early model with closed armrests for Kill International.

Lit.:

Möbel designer Portraits, Stuttgart 1984, p. 61. Design.



Lotto No. 81

Two wall lamps / wall appliques mod. 'Elongated Lamp' / 'Langlyslampen', designed by Poul Henningsen

Stima:

EUR 5.000,- a EUR 7.500,-

c. 1930, for Louis Poulsen, Denmark, classic, pared-down white lacquered metal construction, glass lamellas with matte finish. Dimensions of each lamp c. 29 cm, total height c. 37 cm, width c. 12.5 cm, depth c. 7 cm. Signs of age and use, scratches and abrasions, without guarantee for electrical fitting. (MHA)

The original model of the 'elongated lamp' was designed in 1931 and featured metal lamellas. The version with glass lamellas was introduced in 1934.

Cf. Lit.:

Light Years Ahead - The story of the PH lamp, T. Jørstian & P. E. Nielsen, Louis Poulsen, 1994, ill. p. 245.

Provenance:

Private Ownership, Denmark.



Lotto No. 82

A 'DIE SONNE' pictorial carpet / tapestry, designed by Prof. Josef Schulz *

Stima:

EUR 4.000,- a EUR 5.500,-

1997, manufactured by Atelier Schulz, Vienna, abstract depiction with a polychrome colour scheme, wool. Size c. 146 cm x 247 cm. Verso: <TAPISSERIE 146 x 247 <DIE SONNE> J. Schulz.> Signs of age and use. (MHA)

Josef Schulz (1933-2005) was an Austrian artist, painter, graphic designer, textile designer and university lecturer. He was a professor of Textile Design and Works and former head of the Master School of Tapestry at the Academy of Fine Arts in Vienna. "Josef Schulz graduated from the University of Applied Arts in Vienna with Prof. Wimmer-Wisgrill "Textiles and Painting", then worked freelance and as a teacher at the University of Applied Arts, before being appointed to the Academy of Fine Arts in Vienna in 1975. He was instrumental both in establishing the Institute for Textile Design as part of the training for art teachers, and in founding the Master School of Tapestry, which he directed from 1988 until his retirement in 2002. Schulz was a holder of the Grand Silver Decoration of Honour for Services to the Republic of Austria and the Cross of Honour for Science and Art 1st Class, the holder of a Silver Commander's Cross of the Province of Lower Austria as well as numerous awards. His works are preserved in domestic and foreign collections, in public institutions and museums as well as in private ownership." (https://www.akbild.ac.at/en/news/2005/event_1091, 16.07.2024)

Provenance:

Private Collection, Austria.



Lotto No. 83

A set of four Oxford high back chairs mod. 3162, designed by Arne Jacobsen

Stima:

EUR 3.000,- a EUR 5.000,-

1965, designed by Arne Jacobsen in 1965, manufactured by Fritz Hansen, Denmark, revolving construction made of aluminium cast, upholstered black leather cover, with manufactory labels. Dimensions of each item: height c. 128 cm, width c. 46 cm, depth c. 57 cm, height of seat c. 44 cm. Signs of age and use, scratches and abrasions, partly with slight traces of oxidation, patina. (MHA)

Early production from the late 1960s.

Cf. Lit.:

Arne Jacobsen, p. 524; Charlotte & Peter Fiell: 1000 Chairs, p. 407.



Lotto No. 84

A table lamp mod. "Lavinia", designed by Masayuki Kurokawa

Stima:

EUR 4.000,- a EUR 6.000,-

1988, for Artemide, adjustable construction made of metal sheet with white shrinking lacquer. Height c. 43 cm, width c. 60 cm, depth c. 51 cm. Slight signs of age and use, scratches and abrasions, without guarantee for electrical fitting. (MHA)



Lotto No. 85

A “Light Tree” ceiling / wall lamp, designed by Nanda Vigo,

Stima:

EUR 16.000,- a EUR 25.000,-

1983, manufactured by Nanda Vigo Studio, Italy, quadrangular metal tube, yellow, green and red varnished, opaque prismatic glass panes, neon light, c. 127 x 55 cm, depth c. 40 cm. (DRAX)

This light object, which can be mounted either on the ceiling or on the wall, displays Nanda Vigo's distinctive style, characterised by the juxtaposition of geometric elements in a state of tension with one another. The light is filtered through the diffusers made of processed glass.

Cf. Lit.:

A. Branzi, Le Design Italien «La Casa Calda», Paris 1985



Lotto No. 86

A chaise longue mod. Rio, designed by Oscar Niemeyer

Stima:

EUR 3.200,- a EUR 4.000,-

1970, for Fasem International srl., Vicopisano/ Italy. Classic pared-down structure made of black stained ash, upholstered resting surface and height-adjustable bolster, both with black nappa leather. Height c. 82 cm, length c. 173 cm, width c. 57 cm. Slight signs of age and use, scratches and abrasions. (MHA)



Lotto No. 87 +

An oval “Ippodromo” dining table, Tura,

Stima:

EUR 5.500,- a EUR 8.000,-

Italy 1986, wooden corpus, covered with dark grey dyed parchment, varnished, red painted linear decor, height c. 75 cm, c. 255 x 122 cm. (DRAX)

Provenance:

From the Aldo Tura Archive, Lazzate, Italy.



Lotto No. 88

A large coffee table, Giovanni Banci,

Stima:

EUR 5.000,- a EUR 7.000,-

Italy c. 1970, classic, pared-down, four-legged structure made of gold-coloured brass, square table top. Height c. 45 cm, width c. 130 cm, depth c. 75 cm. Slight signs of age and wear, scratches and abrasions. (MHA)



Lotto No. 89

Two large floral table lamps, Banci,

Stima:

EUR 4.000,- a EUR 6.000,-

Italy, second half of the 20th century, classic design with abstract blossoms and tendrils made of gold-coloured metal and crystal glass, each wired for two lights (E-27 sockets), two slightly tapering cylindrical lampshades. Dimensions of each element: height c. 85 cm, width c. 51 cm, depth c. 28 cm. Signs of age and use, scratches and abrasions, partly slight deformations, replaced lampshades, without guarantee for electrical fitting. (MHA)



Lotto No. 90

A rare bar set by Gucci,

Stima:

EUR 4.000,- a EUR 6.000,-

Italy, second half of the 20th century, silvered and gilt brass constructions. Set consisting of an imposing oval tray, three goblets and an elegant, large wine cooler. All pieces marked 'Gucci Italy'. Dimensions: height c. 22 cm, width c. 60 cm, depth c. 32 cm. Slight signs of age and use, abrasions and scratches. (MHA)



Lotto No. 91

A magnificent, large serving tray / tray with cover in the form of a lamb, Franco Lapini,

Stima:

EUR 6.000,- a EUR 8.000,-

Italy c. 1970, multipiece construction made of silvered metal, cover and board in the form of an abstract lamb, three-dimensional and structured surface. On the inside three further containers with handle. Marked "Franco Lapini Made in Italy". Dimensions length c. 110 cm, depth c. 50 cm, height c. 50 cm. Slight signs of age and use, partly with scratches and abrasions. (MHA)

An exceptionally large and rare model.



Lotto No. 92

A rare floor lamp, designed by Angelo Lelli

Stima:

EUR 7.000,- a EUR 9.000,-

1953, for Arredoluce, Monza, Italy, sculptural floral construction made of lacquered metal and brass in the shape of a flower, marble base, with six downward-facing glass diffusers and a total of 9 lights, three of which are directed upwards. Dimensions: height c. 210 cm, total width c. 65 cm. Signs of age and use, scratches and abrasions, a few small losses (to the lacquer), without guarantee for electrical fitting. (MHA)

The floor lamp can also be used as a ceiling floodlight thanks to the downward and upward-facing lights.

Cf. Lit.:

Anty Pansera et. al., product catalogue, Arredoluce: Ragionato 1943-1987, Milan, 2018, p. 153.

Provenance:

Private Collection Italy.



Lotto No. 93

A drinks cabinet, Aldo Tura,

Stima:

EUR 3.000,- a EUR 4.000,-

Italy c. 1970, four-legged wooden frame, covered with dyed parchment and lacquered, two doors, the interior fitted with glass shelves, two drawers, brass fittings, height c. 135 cm, width c. 85 cm, depth c. 40 cm. Slight signs of age and use, scratches and abrasions, without guarantee for electrical fitting. (MHA)

Lotto No. 94 +

A “Diamond” coffee table, Tura,

Stima:

EUR 4.000,- a EUR 8.000,-



Italy 2008, legs and frame made of cast brass, patinated and structured, top covered with natural colour parchment, varnished, height c. 35 cm, c. 135 x 115 cm. (DRAX)

From a small batch. No longer in production.



Lotto No. 95

A wall lamp, designed by Rupprecht Skrip

Stima:

EUR 3.800,- a EUR 5.000,-

c. 1955, for Skrip lights, Germany, adjustable, elegant construction made of teak wood, cylindrical lamp shade made of parchment, dimensions: height c. 110 cm, width c. 170 cm, diameter c. 15 cm. Signs of age and wear, scratches and abrasions. Without guarantee for electrical fitting. (MHA)

The filigree teak arches are adjustable thanks to the ball joint.



Lotto No. 96

A table after Joan Miro,

Stima:

EUR 4.000,- a EUR 6.000,-

Galerie Editeur Amiot, Paris, c. 1985, distributed by Sollingsgalerie from Rudolph Petrikat, sculptural construction with four-legged metal frame, spherical finials, rectangular table top with polychrome glazed ceramic plate. Dimensions: height c. 42.5 cm, width c. 90 cm, depth c. 60 cm. Slight signs of age and use, scratches and abrasions. (MHA)

Prototype for an edition of only 3 examples.



Lotto No. 97

A set of three vases mod. Caracalla, Pasqua and Ostia from the Roma series, designed by Martine Bedin

Stima:

EUR 3.200,- a EUR 4.500,-

2007, for Superego Editions, polychrome glazed vases reduced to basic geometric shapes. The underside marked with artist's signet, production stamp and number. Dimensions of each item: height c. 24-31 cm, diameter c. 30 cm. Slight signs of age and use, scratches and abrasions. (MHA)

From the "Roma" series, which was produced in an edition of 20 examples.



Lotto No. 98

A vase mod. A, mod. B and Mod. C from the "ABC" series, designed by Alessandro Mendini

Stima:

EUR 3.000,- a EUR 4.500,-

2000, for Superego Editions, polychrome glazed vases reduced to basic geometric shapes. The underside marked with artist's signet, production stamp and number. Dimensions: height c. 76 cm. Slight signs of age and use, scratches and abrasions. (MHA)

From the "ABC" series, which was produced in an edition of 99 examples.



Lotto No. 99

Two ceramic sculptures mod. Pablo and Vincent from the "École d'Arts" series, designed by Massimo Giacon

Stima:

EUR 3.000,- a EUR 4.500,-

c. 2010, for Studio Superego, Milan / Italy, polychrome glazed ceramic sculptures from the École d'Arts series by Massimo Giacon, various artist personalities in comic-like style. Signed and numbered. Dimensions of each element: height c. 60 cm, width c. 60 cm, depth c. 26 cm. Slight signs of age and use, scratches and abrasions. (MHA)

From limited editions of 50 examples each. Massimo Giacon was born in Padua in 1961. He has worked in Milan as a comic author, illustrator, designer, artist and musician since 1980. In 1985, he began working with the architectural firm Sottsass Associati, subsequently continuing his work in design with Matteo Thun, Studio Mendini, Sieger Design and collaborated with Olivetti, Memphis, Artemide, Alessi, Swatch, Philips, Ritzenhoff, Telecom. He began his artistic career in 1990, which led to several solo and group exhibitions in Italy, Switzerland, the USA, Greece and Portugal. In 1994, he began working on the graphic design of websites and CD-ROMs. He has also designed tapestries, carpets, pottery and kitchen utensils, drawn advertising illustrations, collaborated with fashion designers and magazines (Romeo Gigli, Elle, Glamour), planned installations for international exhibitions and created animations for television. In addition to teaching at the European Institute of Design in Milan, he is currently developing the production of several objects for Alessi, planning video games, drawing comics for «Blue» and Coconino Press and continuing his artistic and performing activities.



Lotto No. 100 +

A prototype II of the folding table by artist Claudia Walde (MadC)

Stima:

EUR 4.000,- a EUR 6.000,-

2023, for Eins zu Eins, Germany. Folding construction made of 30 mm thick lightweight panels. The surface is a polychrome special print in line with the artist's requirements. Inscribed, signed and dated by the artist in her own hand: «Prototyp II MadC 23». Slight signs of age and use, scratches and abrasions. (MHA)

Prototype. Folded in half, the table can be used as a console. Its sides differ in shape and colour. Claudia Walde was born in Bautzen in 1980. She is a German graffiti artist and author, better known by her pseudonym MadC. She studied at Burg Giebichenstein in Halle an der Saale and at Central Saint Martins College in London. Her works can be found in Germany, Spain, South Africa, Mexico, Hong Kong, the Czech Republic, Sweden, the USA, Great Britain, Ireland, the Netherlands, Poland, France, Greece and Lebanon. Her body of work is characterised by the use of dynamic font styles and a vibrant palette. Claudia Walde is a member of various artistic groups such as the Bandits (GER/F), the Wallnuts Crew (USA) and the Stick up Kids (planet earth).



Lotto No. 101

A 'Vier Jahreszeiten' pictorial carpet / tapestry, designed by Prof. Josef Schulz *

Stima:

EUR 6.000,- a EUR 8.000,-

1997, manufactured by Atelier Schulz, Vienna, figural depiction with a polychrome colour scheme, wool. Size c. 282 cm x 212 cm. Signs of age and use. (MHA)

Josef Schulz (1933-2005) was an Austrian artist, painter, graphic designer, textile designer and university lecturer. He was a professor of Textile Design and Works and former head of the Master School of Tapestry at the Academy of Fine Arts in Vienna. "Josef Schulz graduated from the University of Applied Arts in Vienna with Prof. Wimmer-Wisgrill "Textiles and Painting", then worked freelance and as a teacher at the University of Applied Arts, before being appointed to the Academy of Fine Arts in Vienna in 1975. He was instrumental both in establishing the Institute for Textile Design as part of the training for art teachers, and in founding the Master School of Tapestry, which he directed from 1988 until his retirement in 2002. Schulz was a holder of the Grand Silver Decoration of Honour for Services to the Republic of Austria and the Cross of Honour for Science and Art 1st Class, the holder of a Silver Commander's Cross of the Province of Lower Austria as well as numerous awards. His works are preserved in domestic and foreign collections, in public institutions and museums as well as in private ownership." (https://www.akbild.ac.at/en/news/2005/event_1091, 16.07.2024)

Provenance:

Private Collection, Austria.



Lotto No. 102

A set of three coffee tables mod. Mushroom, designed and manufactured by Studio Superego

Stima:

EUR 5.000,- a EUR 7.000,-

2020, Milan, Italy, handmade low tables in the shape of a mushroom with satin-finished brass legs, round marble tops. Dimensions of each item: height c. 40 cm, diameter c. 50 cm. Slight signs of age and use, scratches and abrasions. (MHA)



Lotto No. 103

Two bedside tables, designed by Attila Suta

Stima:

EUR 4.000,- a EUR 5.500,-

c. 2022, for Attila Suta Kunglig Hovleverantör, Sweden, four legs, box-shaped construction made of black stained wood, with walnut legs, the front with two drawers, brass claddings and handles, inscribed with maker's mark «Attila Attila Suta Kunglig Hovleverantör», dimensions of each item: height c. 70 cm, width c. 45 cm, depth c. 40 cm. Slight signs of age and use, scratches and abrasions. (MHA)

Hungarian-born Attila Suta designs this classic furniture and also runs his own workshop for its production. Attila Suta lives and works in Sweden.



Lotto No. 104

Two chests of drawers, designed by Attila Suta

Stima:

EUR 6.000,- a EUR 8.000,-

c. 2021, for Attila Suta Kunglig Hovleverantör, Sweden, four legs, box-shaped construction made of black stained wood, with walnut legs, the front with three drawers, brass claddings and handles, inscribed with maker's mark «Attila Attila Suta Kunglig Hovleverantör», dimensions of each item: height c. 80 cm, width c. 90 cm, depth c. 40 cm. Slight signs of age and use, scratches and abrasions. (MHA)

Hungarian-born Attila Suta designs this classic furniture and also runs his own workshop for its production. He is also purveyor to the royal court in Sweden. Attila Suta lives and works in Sweden.



Lotto No. 105

A ceiling lamp, designed by Hugo Berger,

Stima:

EUR 3.000,- a EUR 4.000,-

first quarter of the 20th century, for Goberg, sculptural wrought iron construction in the form of abstract dachshunds, wired for three lights. Dimensions: height c. 80 cm, diameter c. 75 cm. Signs of age and use, scratches and abrasions, without guarantee for electrical fitting (MHA)



Lotto No. 106

A unique artist's table mod. "Mysterious Fish" designed and manufactured by Johann Rumpf

Stima:

EUR 3.000,- a EUR 4.000,-

2022, modified polychrome painted wood frame construction with oval table top; the latter has been cast, finished and conserved by the artist using several materials and techniques including lightfast furniture varnishes and epoxy resin. Titled, signed and dated: «Mysterious Fish» and «Rumpf 2022». Height c. 82 cm, width c. 50 cm, depth c. 40 cm. Slight signs of age and use. (MHA)

A unique piece.

Johann Rumpf was born in Vienna on 7 April 1950.

1970 – 1974: worked for the enamel jewellery company Michaela Frey in Vienna

1973 - 1974: children' art supervisor at the "Wiener Ferienspiel" and organiser of painting courses in Vienna

1976: licence for artistic screen printing

1976: member of the Professional Association of Austrian Fine Artists; foundation of the artisan company Johann Rumpf with a focus on glass painting

1977 - 2010: various exhibitions in Austria and abroad (Vienna, Salzburg, Munich, Frankfurt, New York, etc.)

1992 - 1993: construction of the Kunsthaus Rumpf

1994 - 2023: various exhibitions and art auctions; objects by Johann Rumpf are preserved in various museums and renowned collections such as Barbier-Mueller.

Johann Rumpf lives and works in Vienna.



Lotto No. 107

A set of six chairs mod. Altay, designed by Patricia Urquiola

Stima:

EUR 3.000,- a EUR 4.000,-

2006/2007, for Coedition, four-legged structures made of solid beechwood, upholstered seat with black covering. Dimensions of each element: height c. 69 cm, width c. 60 cm, depth c. 50 cm. Slight signs of age and use, scratches and abrasions. (MHA)



Lotto No. 108

A coffee table mod. Digitalextraction, designed by Wagenschlag in collaboration with Felix PenseL *

2022,

Stima:

EUR 7.000,- a EUR 9.000,-

manufactured by Wagenschlag 2022, sculptural construction made of Waldviertel granite, acrylic glass, acrylic, surface with polished finish. Dimensions: height c. 50 cm, width c. 100 cm, depth c. 45 cm. Weight c. 400 kilograms. Slight signs of age and use. (MHA)

The design of this table has its origins in the metamorphosis of nature. We are observing the transformation of natural materials in an increasingly digital world. What we perceive as beautiful today may be deemed obsolete tomorrow due to the rapid changes brought about by a relentless process of transformation. Do we still value our origins and nature? Nuremberg artist Felix PenseL, born in 1988, is a designer of singular creations that interpret an extraordinary, contemporary lifestyle. With boundless creativity, he experiments with oil, ink, computer, various printing techniques and all forms of new media and is constantly evolving. Felix PenseL was already represented at Art Basel in Hong Kong. He lives and works in Nuremberg.



Lotto No. 109

A chest of drawers / highboard mod. Public-Hideout-Universe, designed by Wagenschlag in collaboration with Felix PenseL * 2022,

Stima:

EUR 8.000,- a EUR 10.000,-

manufactured by Wagenschlag 2022, box-shaped construction made of acrylic glass, MDF, birch, brass, two-door front with storage compartments. Dimensions: height c. 120 cm, width c. 120 cm, depth c. 55 cm. Slight signs of age and use. (MHA)

Expressive Hiding Place Public-Hideout-Universe was originally created from a painting by Felix PenseL. At each step of the joint design process, new materials and finishing touches were added to complete the idea. The digital world makes us all both more visible and invisible than ever before. Public-Hideout-Universe is the counterpart to the <Touch> design. Nuremberg artist Felix PenseL, born in 1988, is a designer of singular creations that interpret an extraordinary, contemporary lifestyle. With boundless creativity, he experiments with oil, ink, computer, various printing techniques and all forms of new media and is constantly evolving. Felix PenseL was already represented at Art Basel in Hong Kong. He lives and works in Nuremberg.



Lotto No. 110

A Unique Coffee Table from the "Bon Bon" Series, designed and manufactured by Studio Superego,

Stima:

EUR 5.000,- a EUR 8.000,-

Milan / Italy, 2018, multicoloured acrylic glass construction reduced to basic geometric shapes. Height c. 42 cm, width c. 116 cm, depth c. 84 cm. Slight signs of age and use, scratches and abrasions. (MHA)

Each table from the Bon Bon series is unique due to its individual colour design.



Lotto No. 111

A 'Future Pyrite' console table, designed and manufactured by Studio Superego,

Stima:

EUR 6.000,- a EUR 9.000,-

Milan / Italy, c. 2020, reduced construction with side walls and rectangular table top made of brass with inserts in blocks and runners made of brass polychrome acrylic glass. Dimensions: height c. 90 cm, width c. 155 cm, depth c. 40 cm. Slight signs of age and use, scratches and abrasions. (MHA)



Lotto No. 112

A side table mod. "Stalactite", designed and manufactured by Studio Superego,

Stima:

EUR 3.400,- a EUR 5.000,-

Milan / Italy, 2019, 32-legged polished brass construction, rectangular malachite table top. Height c. 50 cm, width c. 100 cm, depth c. 100 cm. Slight signs of age and use, scratches and abrasions. (MHA)



Lotto No. 113

A unique "DNA" console table, designed and manufactured by Studio Superego,

Stima:

EUR 5.000,- a EUR 8.000,-

Milan / Italy, 2018, pared-down structure with side walls, rectangular transparent acrylic glass table top with polychrome acrylic glass inserts. Dimensions: height c. 81 cm, width c. 141 cm, depth c. 40 cm. Slight signs of age and use, scratches and abrasions. (MHA)



Lotto No. 114

An installation 'The Mechanism', Natalia Zintsova *

Stima:

EUR 6.000,- a EUR 8.000,-

2012, the installation consists of 25 metal clocks mounted directly on the wall. Overall dimensions within the scope of the intended installation: height c. 200 cm, width c. 290 cm, size of each clock width c. 38 cm. Slight signs of age and use, scratches and abrasions, without guarantee for precision of movement and long-term functioning. (MHA)

Unique piece with original certificate. Natalia Zintsova was born in Moscow in 1971. She is a graduate of the Russian Academy of Theatre Arts (GITIS) with a specialisation in directing (1995), the Moscow State University of Printing Arts with a specialisation in graphic arts (2003) and the Institute of Contemporary Art in Moscow (2007). Zintsova has been working as an artist since 2005, participating in a range of exhibitions. In 2009, she spent four months at the CentralTrak art residence in Dallas, Texas. Natalia Zintsova lives and works in Moscow.

Provenance:

Private Collection, Austria.



Lotto No. 115

A coffee table mod. "Stalattite", designed and manufactured by Studio Superego,

Stima:

EUR 5.000,- a EUR 8.000,-

Milan / Italy, 2022, reduced to basic geometric shapes, construction with round table top made of Lebanese cedar, 16 legs, consisting of stems of different heights made of polychrome acrylic glass and cedar wood, dimensions: height c. 50 cm, diameter c. 100 cm. Slight signs of age and use, scratches and abrasions. (MHA)



Lotto No. 116

A unique coffee table, Helmut Leherb (Leherbauer) *,

Stima:

EUR 7.000,- a EUR 9.000,-

sculptural construction with black lacquered metal frame, table top with glazed tiles and depiction of a bird. One tile signed: <Leherb>. Dimensions: height c. 50 cm, length c. 180 cm, depth c. 73 cm. Signs of age and use, scratches and abrasions, isolated minor chipping. (MHA)

Provenance:

Private Collection, Austria.



Lotto No. 117

Two armchairs, Model No. 62, designed by Niels O. Møller

Stima:

EUR 4.000,- a EUR 6.000,-

1962, for J. L. Møllers Møbelfabrik, four-legged rosewood structure, seats with original leather cover, height c. 80.5 cm, width c. 56 cm, depth c. 51 cm, height of seat c. 44 cm. (MHA) Slight signs of age and use, scratches and abrasions. (MHA)

The present lot is subject to conservation legislation (ASB).



Lotto No. 118

A rare lounge sofa, design by Fritz Neth,

Stima:

EUR 8.000,- a EUR 12.000,-

c. 1950, for Sitzformbau Kassel / Correcta, Munich, Germany, upholstered, four-legged structure with slightly flared metal legs, replaced greyish blue mottled fabric cover. Dimensions: height c. 90 cm, width c. 150 cm, depth c. 90 cm, height of seat c. 44 cm. Signs of age and use, scratches and abrasions, the cover / upholstery professionally replaced some time ago. (MHA)

The counterpart of the Madame armchair



Lotto No. 120

Furniture “You May”, designed and execution by the design agency Walking Chair in cooperation with the Italian company TeraPlast

Stima:

EUR 6.000,- a EUR 9.000,-

In 2008 specially made for the “Vienna Knowledge Space” in the city center of Vienna. The You May seating furniture was subsequently exhibited in 2010 in the Vienna Museum as part of the design exhibition “Vienna Design 2000-2010”. Sculptural construction made of blue plastic. Dimensions approx.. ca. 350 x 250 x 175 cm. Signs of age and use, scratches and abrasions. (MHA)

The You May is a seating, conversation, communication, work and relaxation furniture in one, which offers several people a shared use and thus also a meeting area.

The furniture model “You May” was also made for the “Vienna Knowledge Space” in the city center of Vienna, like the Knowledge Tree and Knowledge Box models from this series.
